



EX-STOCK

PAINT TO ORDER STANDARD COLOURS

	WHITES/CREAMS	BEIGES	BLUES	GREENS	GREYS/BLACKS	PINKS/REDS
Primed	Brilliant White	Shell	Pantry Blue	Sage Green	Dust Grey	Cashmere
Porcelain	Ivory	Taupe Grey	Light Teal	Cardamom	Monument Grey	Vintage Pink
Light Grey		Mussel	Airforce	Reed Green	Gunmetal Grey	Antique Red
Marine		Stone	Parisian Blue	Willow	Graphite	
Heritage Green		Stone Grey	Slate Blue	Viridian	Cannon Black	
		Lava	Indigo	Deep Forest		

CMS Colour Match Service

DOOR SPECIFICATION

Description	Narrow shaker - routed
Finish	Smooth matte painted - 15% sheen
Frame material	MDF (high tension mdf plus)
Door thickness	18mm
Frame width	68mm
Edge colour	As face
Reverse colour EX	As face - melamine matte*
Reverse colour PTO	As face - painted

*Please note: our primed product comes with a White reverse.

LEAD TIMES EXCLUDING DELIVERY (WORKING DAYS)

FINISH	STANDARD PRODUCT
Primed	EX
Painted ex-stock colours	EX
Paint to order standard colours	10
Colour Match Service	20

STANDARD DRAWERFRONTS & DOORS

- 115 x 597 slab
- 140 x 297 slab
- 140 x 397 slab
- 140 x 447 slab
- 140 x 497 slab
- 140 x 597 slab
- 140 x 797 slab
- 140 x 897 slab
- 140 x 997 slab
- 175 x 397 slab
- 175 x 497 slab
- 175 x 597 slab
- 283 x 497
- 283 x 597
- 283 x 797
- 283 x 897
- 283 x 997
- 315 x 457 american fridge freezer door
- 355 x 497
- 355 x 597
- 355 x 797
- 355 x 897
- 355 x 997
- 355 x 1197
- 400 x 597 appliance door
- 450 x 597
- 495 x 397
- 495 x 497
- 495 x 597
- 570 x 297
- 570 x 397
- 570 x 447
- 570 x 497
- 570 x 597
- 645 x 597
- 715 x 147 slab
- 715 x 277
- 715 x 297
- 715 x 315
- 715 x 347
- 715 x 397
- 715 x 397 plain frame includes clear glass
- 715 x 447
- 715 x 497
- 715 x 497 plain frame includes clear glass
- 715 x 547
- 715 x 597
- 825 x 597
- 895 x 297
- 895 x 397
- 895 x 447
- 895 x 497
- 895 x 597
- 825 x 597 with cross rail
- 895 x 297 with cross rail
- 895 x 397 with cross rail
- 895 x 447 with cross rail
- 895 x 497 with cross rail
- 895 x 597 with cross rail
- 895 x 497 plain frame includes clear glass
- 980 x 597
- 1215 x 497 plain frame includes clear glass
- 1245 x 297
- 1245 x 397
- 1245 x 497
- 1245 x 597
- 1425 x 297 with cross rail
- 1425 x 597 with cross rail
- 1965 x 297 with 2 cross rails
- 1965 x 397 with 2 cross rails
- 1965 x 497 with 2 cross rails
- 1965 x 597 with 2 cross rails

STANDARD DOORS



STANDARD DOOR



PLAIN FRAME
includes clear glass



CROSS RAIL DOOR

STANDARD ACCESSORIES



CORNICE
75 X 3050 X 82



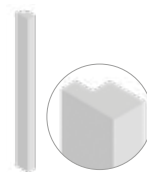
PLINTH
150 X 3050 X 18



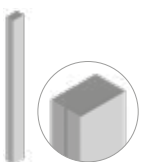
FEATURE PLINTH
150 X 2500 X 9



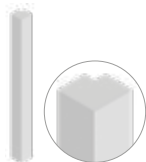
MOULDED
MODERN PLINTH
150 X 3050 X 20



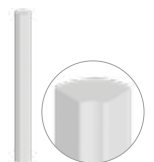
UNIVERSAL MOULDING
35 X 3050 X 60



TALL FEATURE
END POST
3000 X 50 X 75



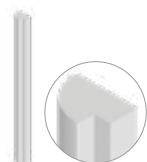
MODULAR PILASTER
900 X 75 X 75



30MM CORNER POST
720 X 30 X 30



INTERNAL
CORNER POST
715 X 70 X 18



QUADRANT END
MOULDING
3050 X 50 X 70



QUADRANT END
CORNICE BLOCK
75 X 92 X 92
(PTO only)



MANTLE CORBAL
166 X 90 X 125 (1NO.)
(PTO only)



LARGE MANTLE
CORBAL
850 X 150 X 448



EDGE MOULDING
27 X 3050 X 47.5



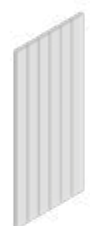
FLYING SHELF
28 X 2400 X 325



SHELF BRACKET
180 X 35 X 140 (1NO.)



PLAIN END PANEL
780 X 360 X 18
900 X 650 X 18
900 X 1200 X 18
960 X 360 X 18
910 X 2430 X 18
2430 X 650 X 18



BEADED END PANEL
900 X 650 X 18*
900 X 1200 X 18*
960 X 360 X 18*
910 X 2430 X 18*
2430 X 650 X 18*

* Beading runs up and down the panel height.

CLIFDEN HANDLELESS KITCHEN

EX
EX-STOCK

PTO
PAINT TO ORDER

CMS
COLOUR MATCH



EX-STOCK

Primed
Porcelain
Light Grey
Marine
Heritage Green

PAINT TO ORDER STANDARD COLOURS

WHITES/CREAMS	BEIGES	BLUES	GREENS	GREYS/BLACKS	PINKS/REDS
Brilliant White	Shell	Pantry Blue	Sage Green	Dust Grey	Cashmere
Ivory	Taupe Grey	Light Teal	Cardamom	Monument Grey	Vintage Pink
	Mussel	Airforce	Reed Green	Gunmetal Grey	Antique Red
	Stone	Parisian Blue	Willow	Graphite	
	Stone Grey	Slate Blue	Viridian	Cannon Black	
	Lava	Indigo	Deep Forest		

CMS Colour Match Service

DOOR SPECIFICATION

Description	Shaker - routed
Finish	Smooth matte painted - 15% sheen
Frame material	MDF (high tension mdf plus)
Door thickness	18mm
Frame width	68mm
Edge colour	As face
Reverse colour EX	As face - melamine matte*
Reverse colour PTO	As face - painted

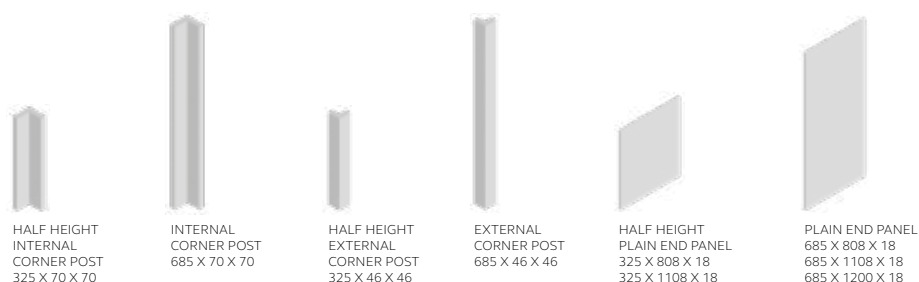
*Please note: our primed product comes with a White reverse.

LEAD TIMES EXCLUDING DELIVERY (WORKING DAYS)

FINISH	STANDARD PRODUCT
Primed	EX
Painted ex-stock colours	EX
Paint to order standard colours	10
Colour Match Service	20

HANDLELESS DOORS & ACCESSORIES

325 x 497
325 x 597
325 x 797
325 x 897
325 x 997
325 x 1197
685 x 397
685 x 447
685 x 497
685 x 597



HANDLELESS KITS

HALF HEIGHT L-SHAPE PANEL & POST KIT FOR BASE UNIT



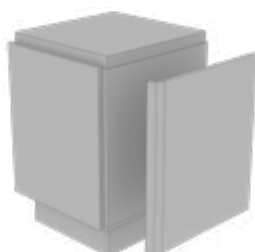
HALF HEIGHT L SHAPE PANEL & POST KIT FOR BASE UNIT*

CODE	KIT INCLUDES
prefix-325600LPANPTKT	1 x half height external corner post 1 x plain end panel 325 x 808 2 x mdf fixing batons

FULL HEIGHT L SHAPE PANEL & POST KIT FOR BASE UNIT

CODE	KIT INCLUDES
prefix-685600LPANPTKT	1 x external corner post 1 x plain end panel 685 x 808 2 x mdf fixing batons

FULL HEIGHT L-SHAPE PANEL & POST KIT FOR BASE UNIT



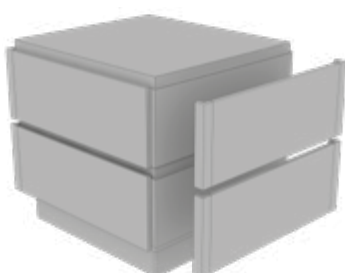
HALF HEIGHT C SHAPE PANEL & POST KIT FOR 900 WIDE ISLAND*

CODE	KIT INCLUDES
prefix-325960CPANPTKT	2 x half height external corner posts 1 x plain end panel 325 x 808 2 x mdf fixing batons

FULL HEIGHT C SHAPE PANEL & POST KIT FOR 900 WIDE ISLAND

CODE	KIT INCLUDES
prefix-685960CPANPTKT	2 x external corner posts 1 x plain end panel 685 x 808 2 x mdf fixing batons

HALF HEIGHT C-SHAPE PANEL & POST KIT FOR 900 & 1200 WIDE ISLANDS



HALF HEIGHT C SHAPE PANEL & POST KIT FOR 1200 WIDE ISLAND*

CODE	KIT INCLUDES
prefix-3251200CPANPTKT	2 x half height external corner posts 1 x plain end panel 325 x 1108 3 x mdf fixing batons

FULL HEIGHT C SHAPE PANEL & POST KIT FOR 1200 WIDE ISLAND

CODE	KIT INCLUDES
prefix-6851200CPANPTKT	2 x half height external corner posts 1 x plain end panel 685 x 1108 3 x mdf fixing batons

FULL HEIGHT C-SHAPE PANEL & POST KIT FOR 900 & 1200 WIDE ISLANDS



* Please note: 2 panel kits are required for each half-height base run / island end solution.