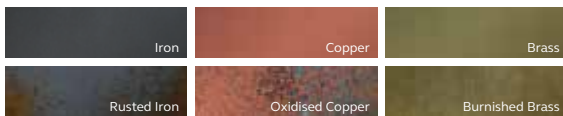




PAINTED METAL COLOURS



DOOR SPECIFICATION

| | |
|-----------------------|-------------------------------|
| Description | Slab |
| Finish | Painted metal |
| Base material | MDF Plus |
| Door thickness | 18mm |
| Edge colour | As face (not weathered) |
| Reverse colour | Colour match - standard paint |

LEAD TIMES EXCLUDING DELIVERY (WORKING DAYS)

| | |
|-----------------------|---------------------|
| FINISH | ALL PRODUCTS |
| Painted metal colours | 25 |

MADE TO ORDER DOORS & PANELS



STANDARD DOOR



SIZE PARAMETERS:

| | Height (mm) | | Width (mm) | |
|---------------|-------------|------|------------|------|
| | Min | Max | Min | Max |
| Drawers/Doors | 70 | 900 | 100 | 1200 |
| Doors/Panels | 901 | 2500 | 100 | 910 |

MADE TO ORDER ACCESSORIES



CORNICE/LIGHT PELMET
28 X 3000 X 50



PLINTH
150 X 3000 X 18

MADE TO ORDER ACCESSORIES: FOR HANDLELESS



INTERNAL CORNER POST
685 X 70 X 70
(FOR HANDLELESS)



EXTERNAL CORNER POST
685 X 46 X 46
(FOR HANDLELESS)

Note Metal paint on face and edges and colour matched on rear side. Further reactive processes are used to create a weathered finish and as these finishes are creatively bespoke, each door will display a different colour and pattern structure.